

Type **TVR2**

WEH[®] Check valve

for reliable return flow prevention in a gaseous media flow and for installation in gas mixing plants



General

DESCRIPTION



Features

- High leak tightness
- Very low noise due to optimized internal gas flow
- Wear and corrosion resistant
- Robust construction
- Simple installation
- High-quality materials

The WEH® TVR2 Check valve was specially developed for installation in gas mixing plants.

The internal seals are arranged so that they are protected from the media flow. This prevents damage to the seals from any dirt particles on the sealing components within the unit.

The check valves, which are very silent in use even under high flow rates, are characterized in particular by their very low cracking pressure and their optimum tightness, which makes them ideal for use with gaseous media.

The WEH® TVR2 is equipped with a EPDM housing seal. Other sealing materials are available on request. It is the customer's responsibility to clarify the media compatibility.

Application

Check valve for reliable return flow prevention in a gaseous media flow and for installation in gas mixing plants.

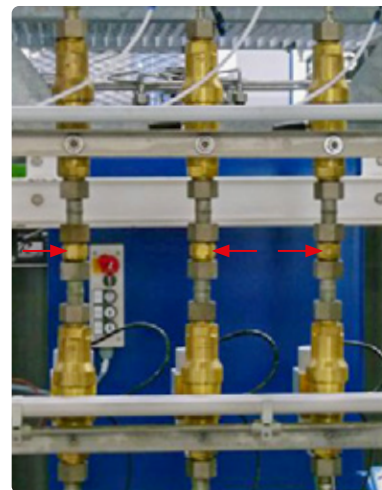
Attention: The TVR2 is not designed to be used as a filling or safety valve!

TECHNICAL DATA

Characteristics	Basic version
Nominal bore (DN)	12 mm
Max. allowable operating pressure PS	420 bar
Temperature range	+5 °C up to +95 °C
Medium	Inert gases
Material	Housing of brass, inner parts of stainless steel
Spring material	Stainless spring steel
Sealing material	Housing seal of EPDM
Sealing concept	Cone sealing with PEEK
Flow direction	B1 → B2

Other designs on request

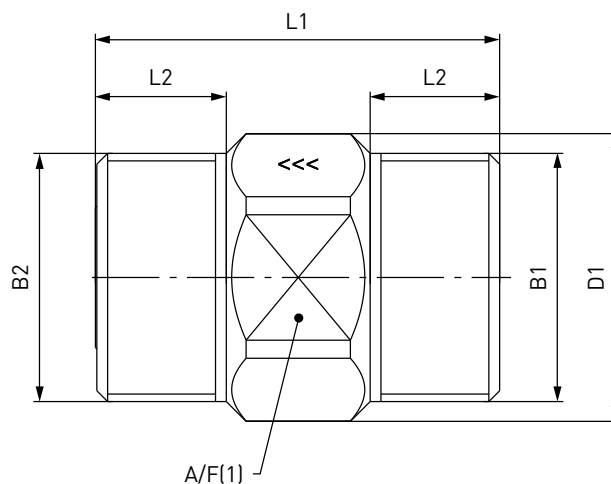
Example of use:



Ordering / Accessories

ORDERING | WEH® TVR2 Check valve

approx. dimensions (mm)



Part no.	Description	B1 (male thread)	B2 (male thread)	L1	L2	D1	A/F(1)
C1-77200-X01	TVR2	UNF 1 3/8"-12	UNF 1 3/8"-12	56	18	40	36

Other connection sizes and types on request.

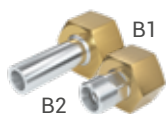
Required information for ordering see page 7, catalog no. 20.

ACCESSORIES

The following accessories are available for the WEH® TVR2 Check valve:

Adaptors incl. sleeve nut

Adaptors with threaded or welded connection for installation of the TVR2 check valve (ports B1/B2) in pipelines or plants.



Part no.	Description	B1 (female thread)	B2
C1-164158	Adaptor	UNF 1 3/8"-12	M24x1.5* male thread for tube Ø 16
C1-166893	Adaptor	UNF 1 3/8"-12	Tube Ø 16**
C1-164157	Adaptor	UNF 1 3/8"-12	G3/8"
C1-100953***	Adaptor	UNF 1 3/8"-12	Tube Ø 16x2
C1-164156***	Adaptor	UNF 1 3/8"-12	Tube Ø 20x3

* 24° cone connection acc. to ISO 8434-1 (S16xM24)

** double ferrule fitting

*** with welding socket

Technical explanations

TECHNICAL EXPLANATIONS

Abbreviations/Definitions

For explanation of abbreviations, definitions of terms and further explanations, see the applicable Technical Appendix of the corresponding catalog or visit www.weh.com

Illustrations

The illustrations and/or images used in these data sheet are particularly provided for illustrative purposes only and may differ in some details from the actual product. For binding information, please refer to your individual orders.

Safe product selection

Our WEH® Products are designed to be operated by qualified professional users (insofar as WEH® Products are also designed to be operated by other users in individual cases, this is explicitly stated in the corresponding operating instructions). Please note that WEH does not know your system and therefore - also due to the large number of different potential applications of WEH® Products - cannot perform tests on all potential types of application. You alone are responsible for the selection, configuration and suitability of WEH® Products, especially according to the requirements of your system. Before purchasing WEH® Products, please particularly ensure that our products are compatible with your intended use, your performance data, your material and fluids, your system concept and your system limits according to our product specifications. Please also consider your technical and legal requirements for operation, handling and maintenance. The quality and safety of WEH® Products is our highest priority. For this reason, WEH® Products may not be used outside the specifications in the relevant data sheets and product descriptions. If you are not sure whether the WEH® Product is suitable for your system and intended use, please contact us in advance. We also strongly recommend that you refrain from using third-party spare parts or a combination of WEH® Products with unsuitable third-party products. You alone are responsible for reviewing the suitability of third-party products. WEH® Products and WEH® Spare parts comply with our quality and safety standards.

Service life

WEH® Products are generally products which may be subject to wear and fatigue during operation and depending on your individual application/use. For details - in particular regarding the corresponding minimum inspection and maintenance intervals - please refer to the respective operating instructions for the WEH® Product.

Explanation on the Pressure Equipment Directive

These WEH® Products are generally classified as pressure accessories in accordance with Article 2 (5) of the Pressure Equipment Directive 2014/68/EU and are considered to be similar to piping. These WEH® Products may not be used as safety accessories. Furthermore, it is pointed out, that these WEH® Products are designed and placed on the market in accordance with the requirements of Article 4 (3) of the Pressure Equipment Directive 2014/68/EU. The assessment with regard to a different classification can, however, be made on request.

External change management

WEH reserves the right to update, optimise and adjust its products continuously. This may result in corresponding changes of the product. Customers will be informed proactively or unsolicited by WEH only in individual cases about product updates, product optimisations and/or product adaptations that have been carried out. You are free to contact WEH at any time to request information about any product updates, product optimisations and/or product adjustments.

© All rights reserved, WEH GmbH Verbindungstechnik.

Any unauthorized copying, distribution or other use of the copyrighted content is strictly forbidden without the written consent of WEH GmbH Verbindungstechnik.

Upon transmission of a newer version of this document, all previous versions are no longer valid. In principle, the latest version of the document is valid. This can be found at www.weh.com.

Our General Terms and Conditions and the Agreement on Protection of Know-How and Quality Assurance (www.weh.com) shall apply to deliveries and other services, unless expressly agreed otherwise.

We do not accept any General Terms and Conditions of the purchaser.

» **Contact**

More questions? – Great! Don't hesitate to contact our experts.

Manufacturer:

WEH GmbH Precision Connectors

Josef-Henle-Str. 1

89257 Illertissen / Germany

Phone: +49 7303 9609-0

E-Mail: sales@weh.com

Website: www.weh.com