

# Type **TK16 CNG**

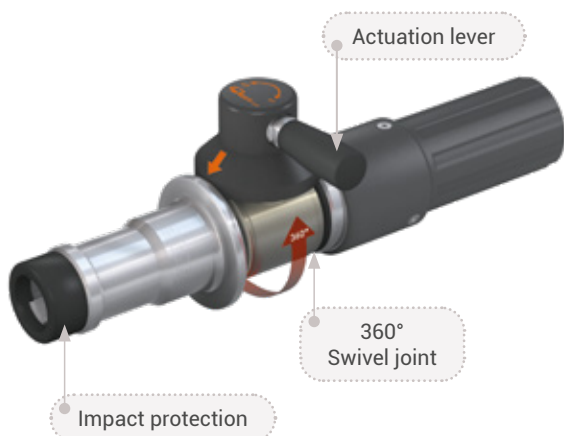
**WEH<sup>®</sup> CNG Fueling Nozzle**

of cars at self-service fueling stations



General

**DESCRIPTION**



**Features**

- Super light ➔ only 1,750 grams
- Compatible with receptacles acc. to NGV1 standard and ISO 14469 (see page 7 in catalogue no. 15, compatibility)
- WEH® EASY-TURN 360° swivel joint for actuation lever
- Easy operation
- Extremely high flow rate ➔ short filling times
- Recirculation of the vented gas
- Plastic thermal protection
- WEH® Jaw locking mechanism
- Colour coded impact protection (200 bar / 3,000 psi black, 250 bar / 3,600 psi yellow)
- High-grade materials
- Coding for pressure range / gas type

**TK16 CNG, the world's most popular NGV1 fueling nozzle.**

Type TK16 CNG is very light in weight and therefore easy to operate. The actuation lever is located on the integrated swivel joint making it easy to rotate into the optimal actuating position. The compact actuation lever needs less effort to actuate the nozzle.

**Safety**

The TK16 CNG offers optimum safety to the operator.

The fueling nozzle remains connected to the receptacle until the gas between inlet valve and receptacle is depressurized.

**Application**

Fueling nozzle for CNG fast filling of cars at self-service fueling stations to be used with WEH® Receptacles acc. to NGV1 standard and ISO 14469 (see page 7 in catalogue no. 15, compatibility).

**TECHNICAL DATA**

| Characteristics                | Basic version  | Options    |
|--------------------------------|--|------------|
| Nominal bore (DN)              | 8 mm   | On request |
| Pressure range                 | P30 acc. to ANSI NGV1 / B200 acc. to ISO 14469<br>PN = 200 bar (3,000 psi)   PS = 300 bar<br>P36 acc. to ANSI NGV1 / B250 acc. to ISO 14469<br>PN = 250 bar (3,600 psi)   PS = 350 bar |            |
| Temperature range              | -40 °C up to +85 °C (-40 °F up to +185 °F)   | On request |
| Material                       | Corrosion resistant  | On request |
| Sealing material               | Natural gas resistant  | On request |
| Design                         | With plastic thermal protection and gas recirculation  | On request |
| Weight                         | Approx. 1.75 kg (3.86 lbs.)  |            |
| Conformity / Tests / Approvals | The products comply with ANSI NGV1-2006  |            |

Ordering / Accessories

**ORDERING** | WEH® TK16 CNG Fueling nozzle

approx. dimensions (mm)



| Part No.               | Description | Pressure (PN)       | B1 (male thread) | C2 (male thread) |
|------------------------|-------------|---------------------|------------------|------------------|
| <b>C1-35299-X5-X01</b> | TK16 CNG    | 200 bar / 3,000 psi | UNF 9/16"-18*    | UNF 7/16"-20*    |
| <b>C1-101084-X01</b>   | TK16 CNG    | 250 bar / 3,600 psi | UNF 9/16"-18*    | UNF 7/16"-20*    |

\* acc. to SAE J514, 37° cone

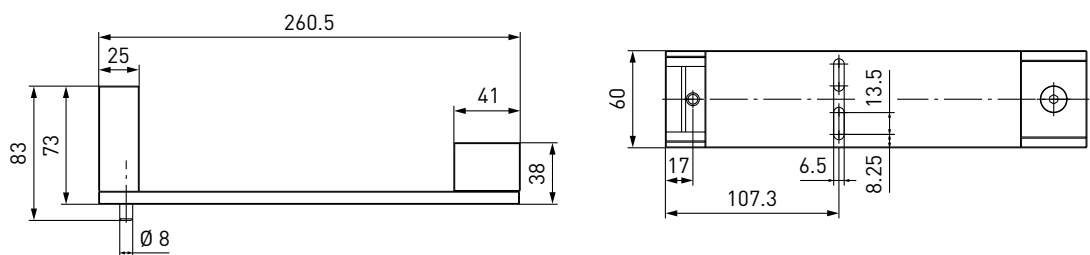
Please see page 20 in catalogue no. 15 onwards for fueling assemblies consisting of fueling nozzle, hose set and breakaway coupling.

**ACCESSORIES**

The following accessories are available for the WEH® TK16 CNG Fueling nozzle:

**Dispenser mounting**

Mounting for safe attachment of the fueling nozzle to the dispenser. Optionally with or without switch actuation.  
Design: Aluminum, stainless steel

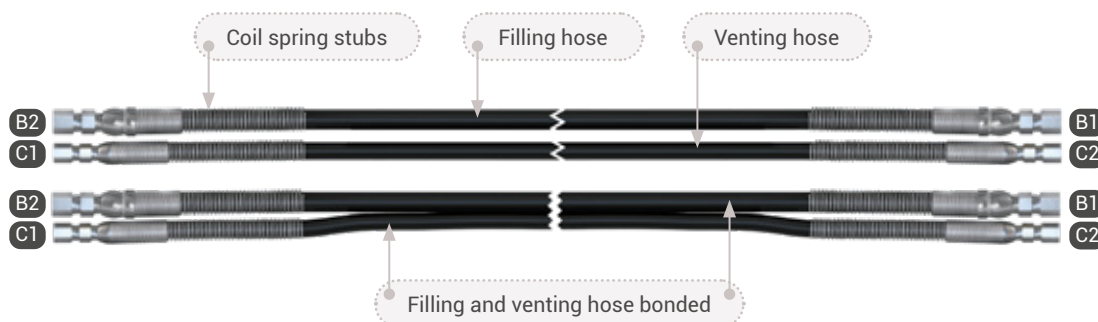


| Part No.        | Description                              |
|-----------------|--|
| <b>C1-51233</b> | Dispenser mounting (switch actuated)     |
| <b>C1-51236</b> | Dispenser mounting (not switch actuated) |

Accessories

Hose sets TK16 CNG - TSA1 CNG

Filling and venting hoses for connecting fueling nozzle and TSA1 CNG breakaway coupling, complete with fittings and press-fittings supported by coil spring stubs. Available as single or twin hoses (permanently bonded).



| Part No.        | B1/B2 (female thread) | C1/C2 (female thread) | Hose length |
|-----------------|-----------------------|-----------------------|-------------|
| <b>C1-50487</b> | UNF 9/16"-18*         | UNF 7/16"-20*         | 3 m         |
| <b>C1-42304</b> | UNF 9/16"-18*         | UNF 7/16"-20*         | 4 m         |
| <b>C1-58587</b> | UNF 9/16"-18*         | UNF 7/16"-20*         | 5 m         |

\* acc. to SAE J514, 37° cone  
 All designs also available with permanently bonded filling and venting hose. Please contact us!

Hose sets TK16 CNG - TSA2 CNG

Filling and venting hoses for connecting fueling nozzle / dispenser and TSA2 CNG inline breakaway coupling, complete with fittings and press-fittings supported by coil spring stubs.

| Part No.          | B1/B2 (female thread) | C1/C2 (female thread) | Hose length |
|-------------------|-----------------------|-----------------------|-------------|
| <b>On request</b> | UNF 9/16"-18*         | UNF 7/16"-20*         | 2.5   0.5 m |
| <b>On request</b> | UNF 9/16"-18*         | UNF 7/16"-20*         | 3.5   0.5 m |
| <b>On request</b> | UNF 9/16"-18*         | UNF 7/16"-20*         | 4.5   0.5 m |

\* acc. to SAE J514, 37° cone  
 All designs also available with permanently bonded filling and venting hose. Please contact us!

Conversion Kit

We also offer a conversion kit to fit fueling hoses with older fittings. The conversion kit consists of one fitting each for the filling and the venting line. The existing TK16 CNG fueling nozzle fittings must be removed and replaced by the conversion kit fittings.



| Part No.      | Description    | Connection fueling nozzle   | Connection filling hose |
|---------------|----------------|-----------------------------|-------------------------|
| <b>W59444</b> | Conversion Kit | UNF 9/16"-18* female thread | Tube Ø 6                |
| <b>W86380</b> | Conversion Kit | UNF 9/16"-18* female thread | Tube Ø 1/4"             |

\* acc. to SAE J514, 37° cone

Accessories

Fittings

Stainless steel fittings for connecting port 'B1' to the filling hose or port 'C2' to the venting hose.

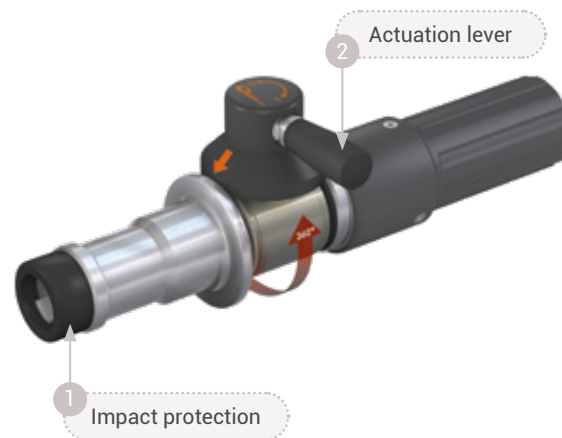
| Part No.         | Description | Connection fueling nozzle   | Connection filling hose      |
|------------------|-------------|-----------------------------|------------------------------|
| <b>E80-79538</b> | Fitting     | UNF 9/16"-18* female thread | UNF 9/16"-18** female thread |
| <b>E80-65592</b> | Fitting     | UNF 9/16"-18* female thread | NPT 1/4" female thread       |

\* acc. to SAE J514, 37° cone  
 \*\* acc. to SAE J1926-1

Please see page 132 in catalogue no. 15 onwards for a detailed overview on all available fittings.

Spare parts

Various parts are available as spares for the TK16 CNG fueling nozzle.



| Part No.          | Description                                      |
|-------------------|--|
| <b>E81-143605</b> | 1 Impact protection 200 bar / 3,000 psi (black)  |
| <b>E80-106824</b> | 1 Impact protection 250 bar / 3,600 psi (yellow) |
| <b>W72504</b>     | 2 Actuation lever                                |
| <b>E99-44923</b>  | Maintenance spray                                |

## Technical explanations

## TECHNICAL EXPLANATIONS

**Abbreviations/Definitions**

For explanation of abbreviations and definitions of terms see technical appendix of the corresponding catalog or [www.weh.com](http://www.weh.com)

**Illustrations**

The illustrations and/or images used in these data sheet are particularly provided for illustrative purposes only and may differ in some details from the actual product. For binding information, please refer to your individual orders.

**Safe product selection**

Our WEH® Products are designed to be operated by qualified professional users (insofar as WEH® Products are also designed to be operated by other users in individual cases, this is explicitly stated in the corresponding operating instructions). Please note that WEH does not know your system and therefore - also due to the large number of different potential applications of WEH® Products - cannot perform tests on all potential types of application. You alone are responsible for the selection, configuration and suitability of WEH® Products, especially according to the requirements of your system. Before purchasing WEH® Products, please particularly ensure that our products are compatible with your intended use, your performance data, your material and fluids, your system concept and your system limits according to our product specifications. Please also consider your technical and legal requirements for operation, handling and maintenance. The quality and safety of WEH® Products is our highest priority. For this reason, WEH® Products may not be used outside the specifications in the relevant data sheets and product descriptions. If you are not sure whether the WEH® Product is suitable for your system and intended use, please contact us in advance. We also strongly recommend that you refrain from using third-party spare parts or a combination of WEH® Products with unsuitable third-party products. You alone are responsible for reviewing the suitability of third-party products. WEH® Products and WEH® Spare parts comply with our quality and safety standards.

**Service life**

WEH® Products are generally products which may be subject to wear and fatigue during operation and depending on your individual application/use. For details - in particular regarding the corresponding minimum inspection and maintenance intervals - please refer to the respective operating instructions for the WEH® Product.

**Explanation on the Pressure Equipment Directive**

These WEH® Products are generally classified as pressure accessories in accordance with Article 2 (5) of the Pressure Equipment Directive 2014/68/EU and are considered to be similar to piping. These WEH® Products may not be used as safety accessories. Furthermore, it is pointed out, that these WEH® Products are designed and placed on the market in accordance with the requirements of Article 4 (3) of the Pressure Equipment Directive 2014/68/EU. The assessment with regard to a different classification can, however, be made on request.

**External change management**

WEH reserves the right to update, optimise and adjust its products continuously. This may result in corresponding changes of the product. Customers will be informed proactively or unsolicited by WEH only in individual cases about product updates, product optimisations and/or product adaptations that have been carried out. You are free to contact WEH at any time to request information about any product updates, product optimisations and/or product adjustments.

© All rights reserved, WEH GmbH. Any unauthorized use is strictly forbidden. Subject to alteration.

No liability will be assumed for any content. Herewith previous versions are no longer valid.

**» Contact**

More questions? – Great! Don't hesitate to contact our experts.

Manufacturer:

**WEH GmbH Gas Technology**

Josef-Henle-Str. 1

89257 Illertissen / Germany

Phone: +49 7303 95190-0

E-Mail: [ngvsales@weh.com](mailto:ngvsales@weh.com)

Website: [www.weh.com](http://www.weh.com)